

2024.03.27 Notes

Design/Dwgs/Model: **Gesture**


12:30pm



Welcome to 3rd week in Design, Construction and Addition to Villa Vuoto.

First week covered **proxemics**, Rowena Reed's **conscious focus on thresholds**, Last week **my subconscious creative process**, drawing from **emotive memories**, Today combining the two into **proxemic relationships** in **gestures** of Villa Vuoto.


ARCHITECTURE: EMOTIVE FROM PHYSICAL FORM & ENERGY CURRENTS

Copy of **Syllabus**? **TIME** ~~Date~~ for **Tour** of Villa Vuoto? **Wed.**, April **17th** **TIME**? 

Before getting into today's lecture on the **design** of my house, Villa Vuoto, since **Villa Vuoto** is a house, first, provide a **brief framework / context on houses**, from the **long arc** beginning with the **first human settlements 10K-12K years ago**, through the **lens of American history** and in particular, the **Ohio River valley region**.

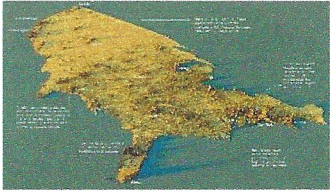


18th century invention: **steam engine** (**science**: water + fire: "**can do**") led to **precision machining** in **large scale factory production** and **rise of engineering** as a profession, as mathematics and science were applied to the architectural arts. Advent of **calculation** and **certification**, **formulas** and **drawings on paper** replaced the previous **Medieval ordered crafts**, of **intuitive and empirical modeling in physical materials**, handed down each generation since antiquity, **skills refined through practice** and **firsthand experience**. Since **domestication of fire** in a cave, **seeking warmth and shelter**, is **radically changing** in just the last few centuries.

As this industrial revolution progressed, a **battle waged over two visions** for the American continent, that had **roots in dawn of civilization** and still continues today. 

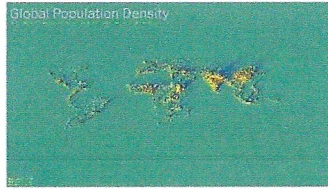
Articulated in **1804**, between **Aaron Burr**, supporting a **pastoral agrarianism** of America as the **land of farmers**, laid out on **Thomas Jefferson's agrarian grid** of **forty acres and a mule**, to repress decadence / disease of European populated cities; challenging an **urban industrialism** pushed by **Alexander Hamilton**, the architect of the American industrial revolution, proposed **harnessing energy of waterfalls** to **power manufacturing plants**, for great industrial cities, to compete with Europe.

Burr may have won the **July 11th** archaic code of honor duel, but **loosing the war**.

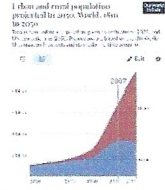


1870-1920: 11M people, migrated rural to urban.

1920: more people in U.S. cities than rural areas.



Industrialization worldwide by 1950s in urban areas.



Rural population peaks, now declining. [Nationalism: Trump]

2007: world urban population surpassed rural population.

Example:

300BC:

Barkeno

Iberian village w/o walls



under Roman rule/protection a walled city

14AD: **Barcino** (3K people) Caesar Augustus



port city/trade expands beyond walls (30K people)

1258: **Barcelona** Crown of Aragon: James I

1333 AD: new wall/famine (10K die) growth beyond agriculture

1469: Aragon: Ferdinand II & Castile: Isabella I (consolidation)

1701-1714: War of Spanish Succession (Philip V) third fortified wall (35K people)



1897: industry: Eixample "Expansion" Plan/re-center city (500K people)

1936-1939: Spanish Civil War: Franco (1M people)



Today, Catalan capital (1.6M people) expanded beyond 1897 Expansion Growth is continuous cycle of fortifying (perimeter), then sprouting (expansion).

Future?: continued struggle between natural rural & manmade urban

Sub-urbs is on the front line: perimeter, envelope between...

Location of Villa Vuoto & thesis: study of these thresholds.

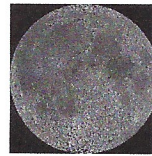
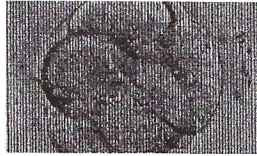
I-279 Parkway North (1972-2002 opened) broke ground on Villa Vuoto

1970s: "can do" transitioning to "afraid to", safety rails & trust in science.

[A.I. steps in to offer sense of "safety" (shelter), human confidence will dissolve.]

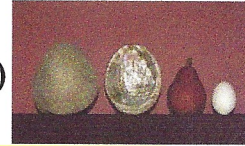
Disclosure: Villa Vuoto has multiple building code violations. Designed and built for and by a (self-reliant) family, under no illusions of perceived safety in life.

FEW DESIGN w/ THESE METHODS (SUBCON./FEEL)

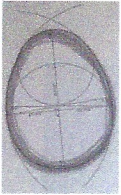


Began with a **circle** (anti-box), from **microbes to planets** are **circular** (universal).

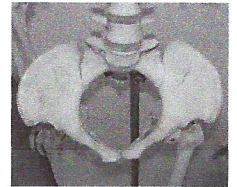
(2001.03.26)



But **not perfect** circles (not Plato's), **reality is deformed, gestured**.



Egg dwg: **intuitive refinements**
(1997.03.02)

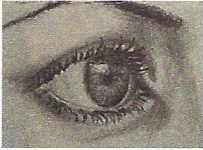


Egg, seed, cell, star, forms that create life, hold the creative energy.
Even canal for giving birth is a circle, **first passage/threshold** in life.



370

Imagine **space is circular**. Imagine, because **we think industrially, sectioning space cartesian grids, x, y, z, four cardinal directions, linear, not cyclical, spiral, flowing**.

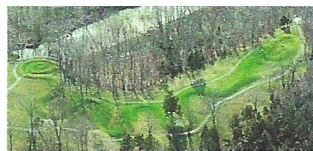


Space is dimensional, with **depth**, in all **directions, not flat**.

Form **rolls, folds, slumps, swells, dips, anatomically, not regular**.

Space differentiates, not arbitrary abstraction (N, S, E, W), but by **specific local elements** (sunlight direction, moisture in prevailing breeze, sound waves, ...).

Spiraling Snake

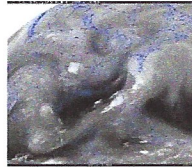


Cosmic Egg/Eye

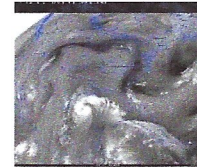


Great Serpent Mound (Ohio Brush Creek, 300 BC)

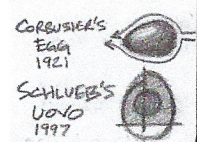
currents, tides, moons (Venice Beach, LA 1998.02)



+6

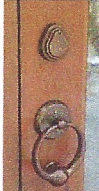
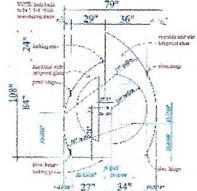


Flow of space: energy currents (light, sound, vapor, ...) flowing, **absorbed** and reflected by **physical material** form, **varied** in density and **layered** by proxemic distancing and positioning, creating unique **signature** waves, **gathered** by senses, **translating** into internal **intuitions** and feelings, the **sense of place**.



Gathering 1pm

Brunelleschi's **Duomo** (1418): **Gravitation** Corbu's **Machine** (1921): **Efficiency**
 Gaudi's **Estereostatic** (1898): **Inverted** Schlueter's **Villa Vuoto** (1997): ~~Flow~~ 11:35 AM



egg
circle

YOLK
(CIRCLE,
NOT EGG)

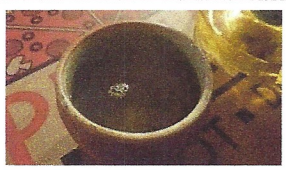
Front door (2001.06.11): **asymmetrical pair** of doors with **circular perimeter**.



+2



Gathering of form: **empirical** observation, discern **directly**, **intimately** w/ source, **receptive** to slightest nuance, **fluid** to exchange, **soft** to deform, to **feel** as one.
 Simply looking/listening, w/o bias, w/o words, **knowledge** can be gathered.



+4

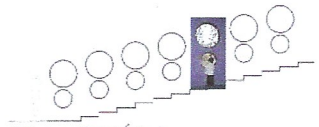
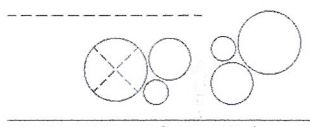


circular
currents



Gold-Mouth Turban sea snail
 spiral funicle umbilical threshold

TENSILES



window groupings (2001.06.01)

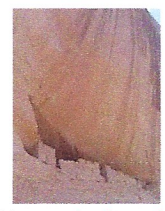


visited
1997.09

+3



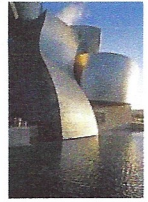
gathering
form



yin energy
valley/recesses

Anasazi Cliff Dwelling (Canyon de Chelly / Tséyi) "rock inside of", 1060 AD)

deformed
structure

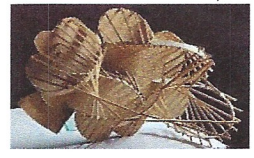


anatomic
form

Frank Gehry's Guggenheim Museum (Bilbao, 1997.10)

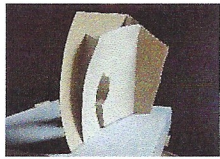
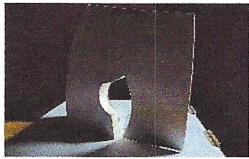
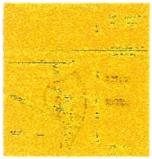


Linear Curvature +2



gathering
recesses in form
(riad garden)

Arc/Stick Flow model (1998.03.26 – 04.05)



1:10 [10 MINUTE BREAK]

curvature
laminations

Circular 1:20

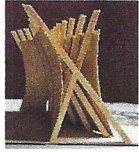
Asymmetric Threshold / Wall model (1998.11.29)



single plane Ruffin
self-supporting



Richard Serra: Torqued Ellipses (Museum of Contemporary Art, LA 1999.01.02)



straight stock framing

1:31 Pm

Linear Curvature study model (1998.12+)



+3



able to replicate curvature efficiently / economically
studied sculptural anatomic form

Volkman model (1999.02.05)

design
in plan



sculptural
form

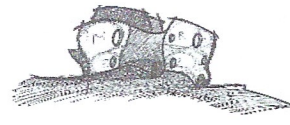


Mt. Washington bubble diagram (1999.02.02) and **model** (1999.12.15)

I-279
(2002)



Kuskusky Path
(Wash.1753)



riad
garden



PA License, FP Lot, and **Anniversary sketch** and **elevation** (2000.06.11)

NOTE:

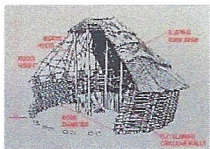
Egg
rooms



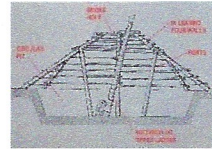
+6



Franklin Park plan (2000.07.02) and **model** (2000.07.16)



outward
walls



inward
roof

Adena wigwam (500 BC - 100 AD)

Pueblo Kiva (700 - 1350 AD)

Indigenous circular dwellings (worldwide): rooms are rounded, walls slope in / out, heightening sensibilities to subtleties only revealed by careful handling of soft, curvilinear, textural, anatomic form. [centered = singular being ■]



It seems that round space suits the human body and soul better, nearly the same way a drawing expresses an idea more intuitively than words.

Note:



circle
rooms



toilet tucked into narrow recess of egg
sense of burrowing inside, sheltered

Sensing 1:30pm

Revised FP plan (2001.05.21)

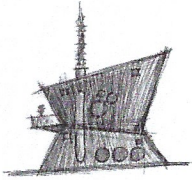
Circular space: sense of centering, singular grounding, resonating with **Being**.

Egg space: gestured, sense of orientation, shifting focus, dynamic.

Indigenous circular dwellings, feel stable, more concentrated than open space.

[2024.03.26 7:24pm oo extracted subconscious influence of Adena on 2001.01.14]

OUTSIDE



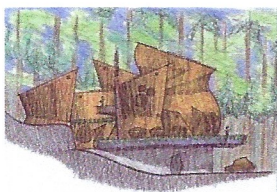
Adena stacked
atop Kiva

Tapered parti (2001.05.22 422m55t150s)

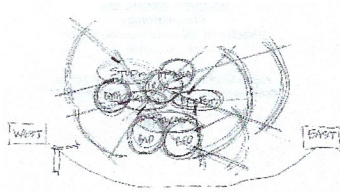
411: Daily life filled with feeling, intuition, premonition. Continually checking, monitoring current state: anxious/relaxed, worried/intrigued, frustrated/aligned, numb/enraptured? Our bodies designed to engage, sense our surroundings [somatosensory transduction: neurons converting external stimuli into senses], beginning with prenatal abyss, continuing in childhood expanding out exploring, without natural, organic, anatomic spaces, without stimulus, numb, hollow, silent.

Bodies seeking resonant, emotive space/form, are left unfulfilled, longing, beckons to our dwellings, vacancies in our being shape space we inhabit, distortions of perception the mind creates filling voids. Our primary home is our being, this is where we live our lives. The world around us is filtered by it, the manifestation of walls and roof are simply a housing we sense individually, subjectively, intimately, and when that architecture is muted, our senses slip away via entropic easing. Beinahe nichts (almost nothing, greatest effect by meagerest means) is not enough.

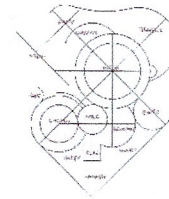
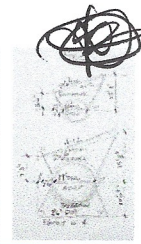
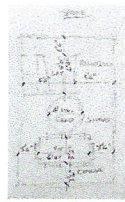
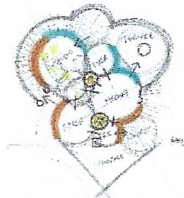
Standardize, orthogonal, measured spaces of the **Industrial age**, replacing the idiosyncratic, irregular, intuitive spaces of **Indigenous age**, has lost something in the architecture, that circular form / space of Villa Vuoto hopes to restore.



Tapered elevation (2001.05.22 422m56t040s)

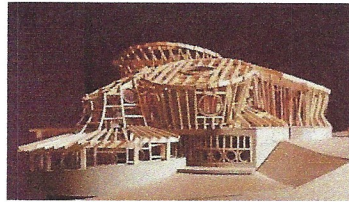


+2



Gestures 1:40

Bubble diagrams (thru 2001.05.31) **Proxemics** **Hardlined to scale** (2001.06.08)



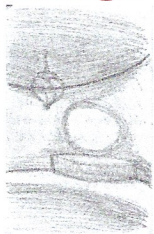
Named Villa Vuoto, **framing model** (2001.06.23 – 09.24)

394: **Varying radii spiraling in plan**, simplistic geometry to **instill a solidity** and bold **definition at corner transitions**, to avoid arbitrary non-mathematic freeform. **Straight linear segments** leaning in vertical section, maintained clarity and elegance of **oblique conical interior surfaces** and the **hyperboloidal exterior surfaces** from inverted stacked rooms.

Language in form: feelings created by each physical gesture in space / form.

Gestalt layering of materiality, lighting, metaphor, temperature, ... translating into an **emotive response**.

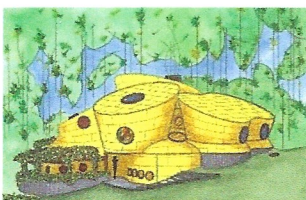
Perceived / understood through **proprioception kinesthesia**: sensing relative **position of body parts** (muscles, joints, tendons) in **tension, compression, relaxed**, to comprehend **posture / movement of body** (gesture) AND **personification**: the feelings of body gesture are transferred / attributed to architectural space / form.



Walls inclined inward: burrow into recess vs. **inclined outward:** release.

Emotive gestures the form / space express:

'Inanimate' objects retaining emotional feeling, kids find **alive with persona**.



Titanium elevation (2001.10.21 - 12.03)

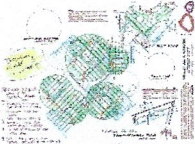


wind water
currents



EMPIRICAL
KNOWLEDGE

Feng shui (2002.02.05)



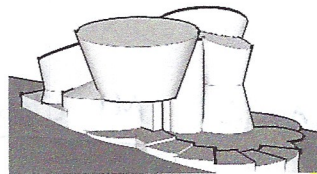
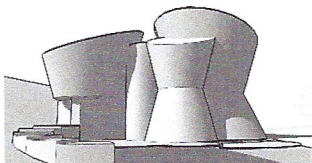
Framing Plans / Bids (2002.03.07)

Siting house on Lot (2002.03.14)



Quantify Materials (2002.04.26)

435



i cinque punti di architettura (2002.05) five proxemic relationships of household

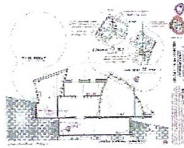
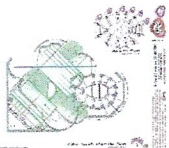
l'uovo: **multitude public**, clothing, to cover up, **sense of modesty**, vanity. [outside]

la vita: **two pair friends**, gathering, to herd, **sense of settlement**, hospitality. [stand]

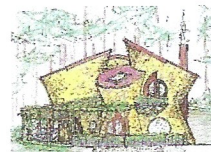
la cucina: **trinity family**, commune, to embrace, **sense of tangible**, consume. [sit] **CHAIR**

il rifugio: **pair couple**, fetal, to retreat, **sense of release**, recharge. [lay] **HAMMOCK**

il vuoto: **individual being**, meditate, to dissolve, **sense of oneness**, entropy. [inside]



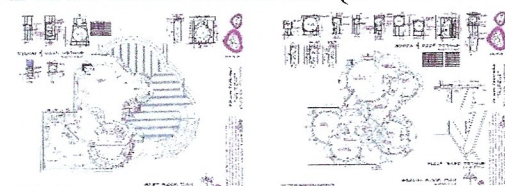
Construction Details (2002.06.17)



without studio
void/vuoto

Abandon Steel Frame (2002.07.26) **Plaster Elevation w/o Studio (2002.08.04)**

First tree cleared (2002.08.07) **Broke ground, Oskar born (2002.08.16)**



Adjusting during construction
Flexible to sense currents on site

Final Construction Drawings (2003.09.03)