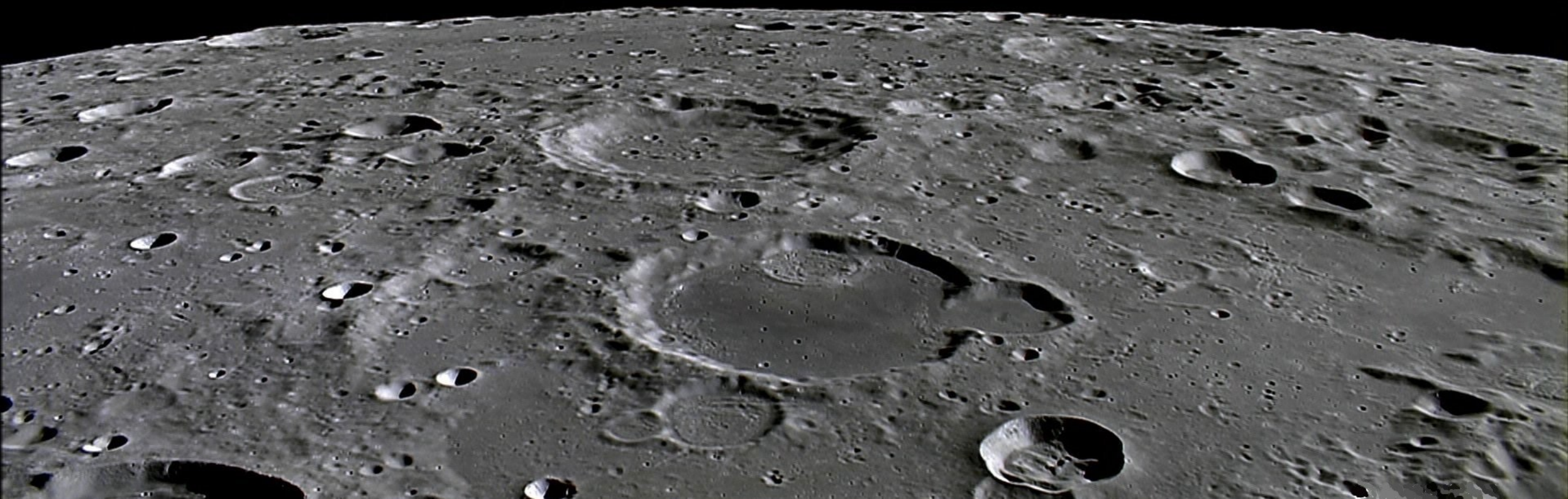
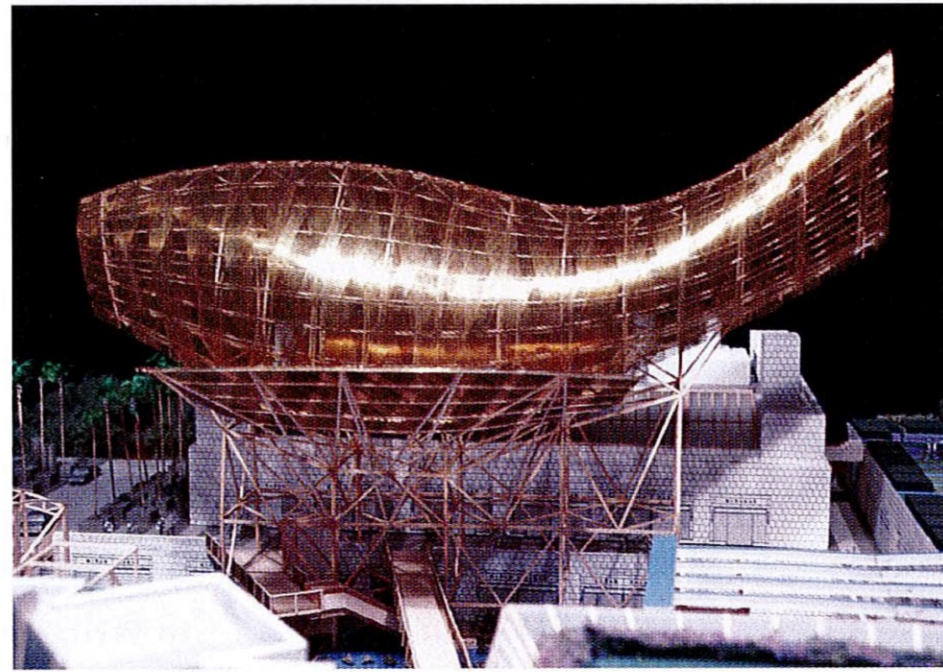
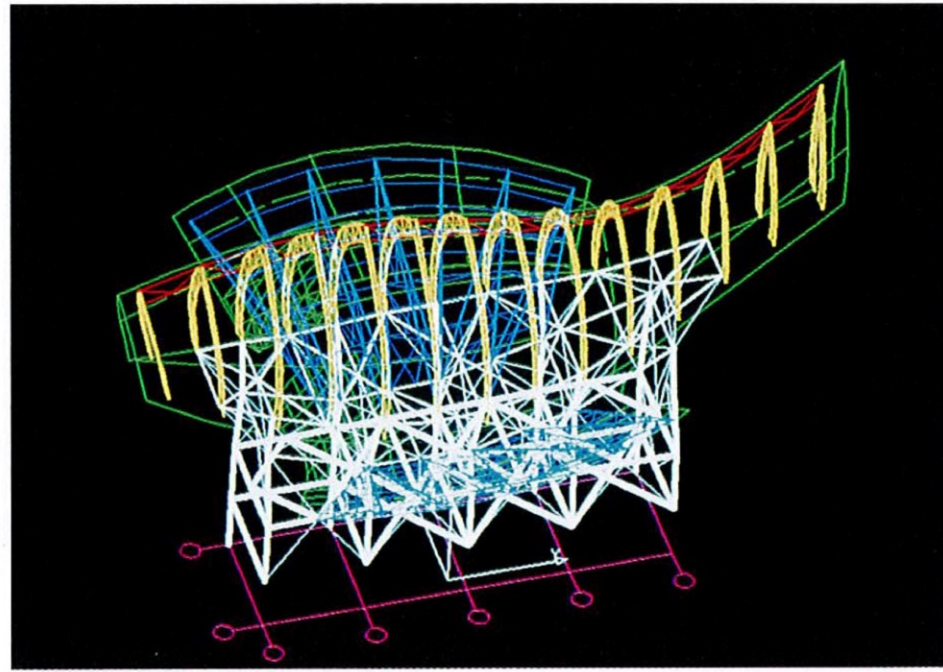
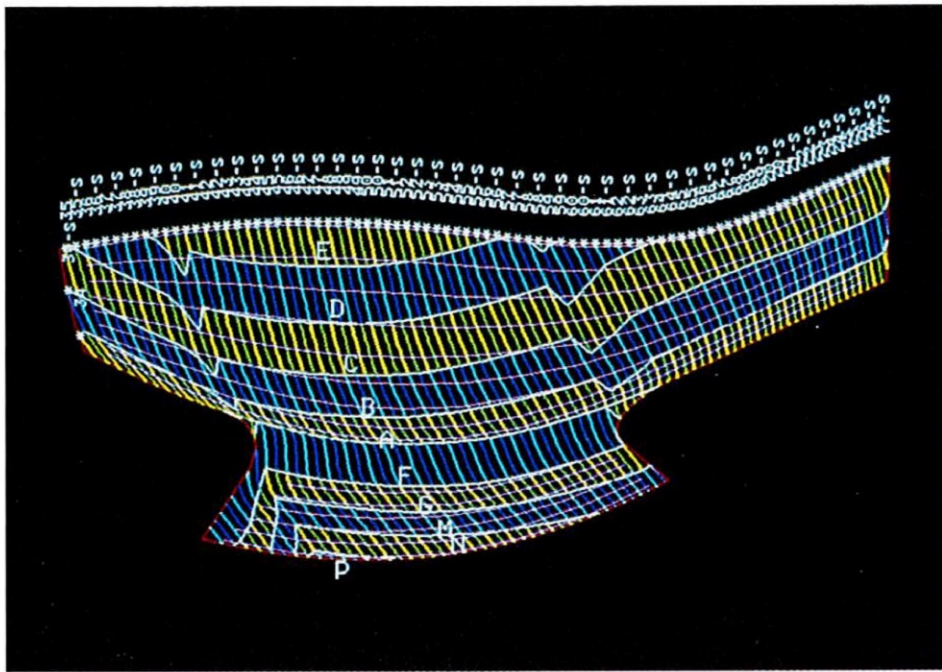


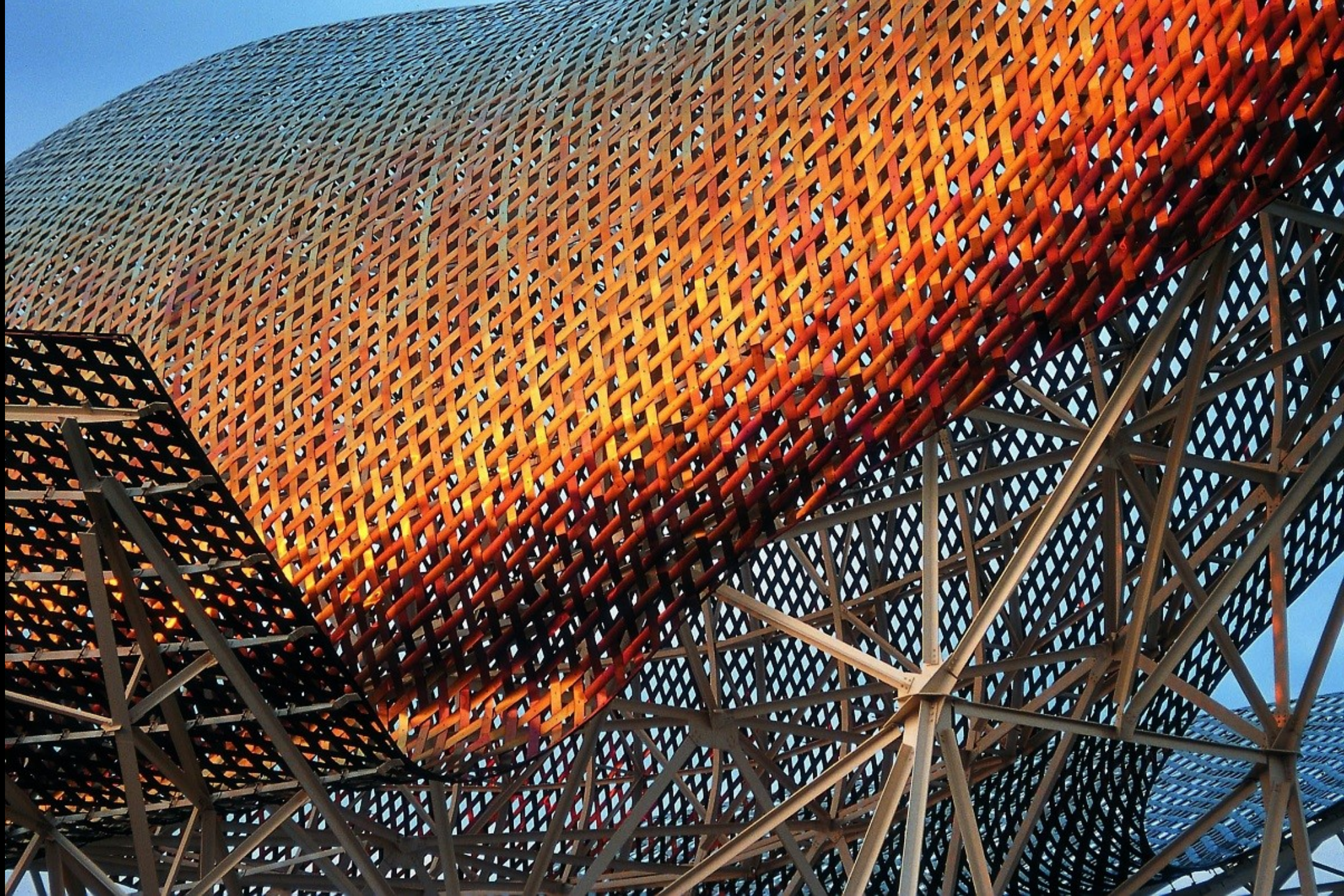
Future of Architecture?

2024 Round Table Forum







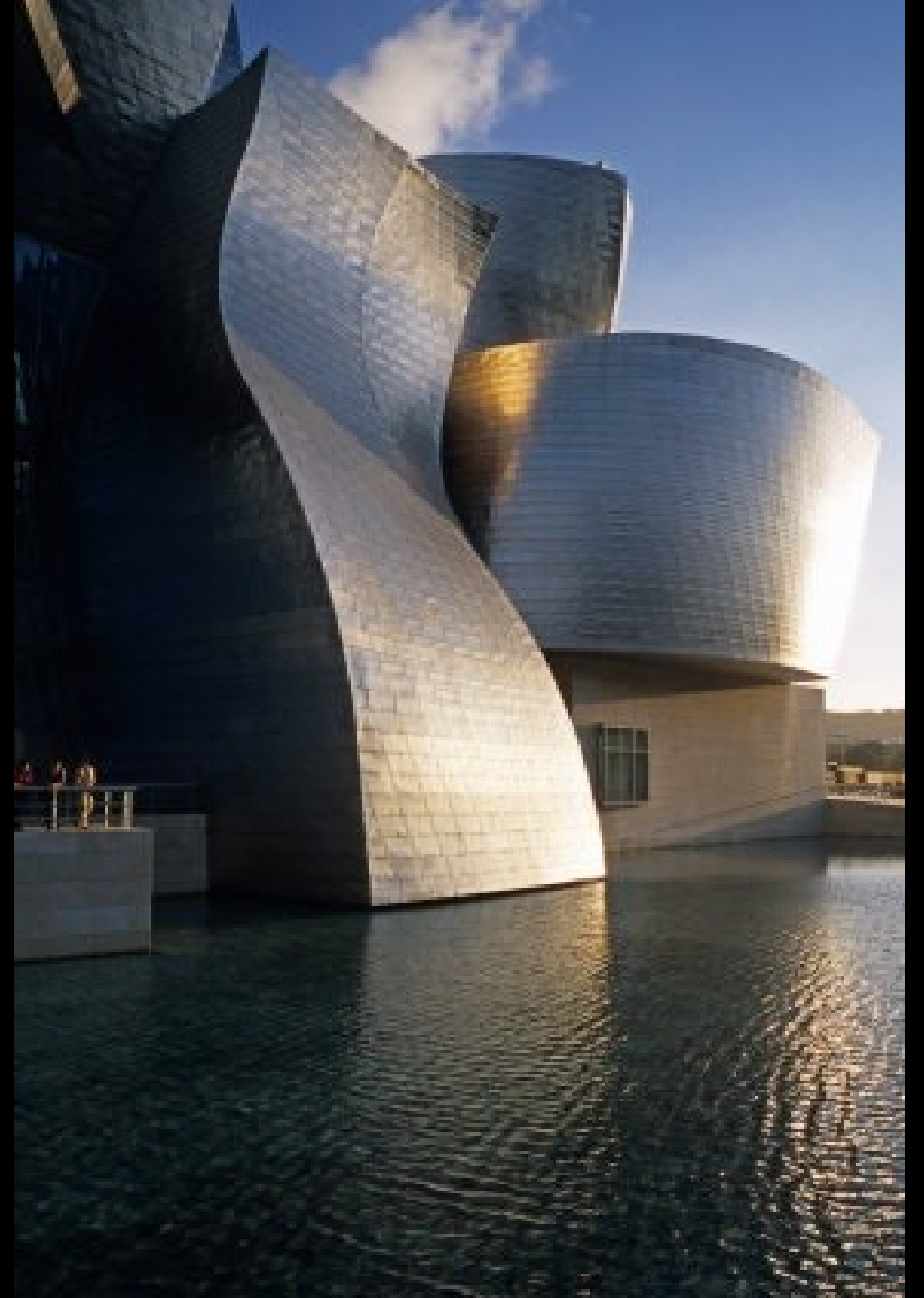
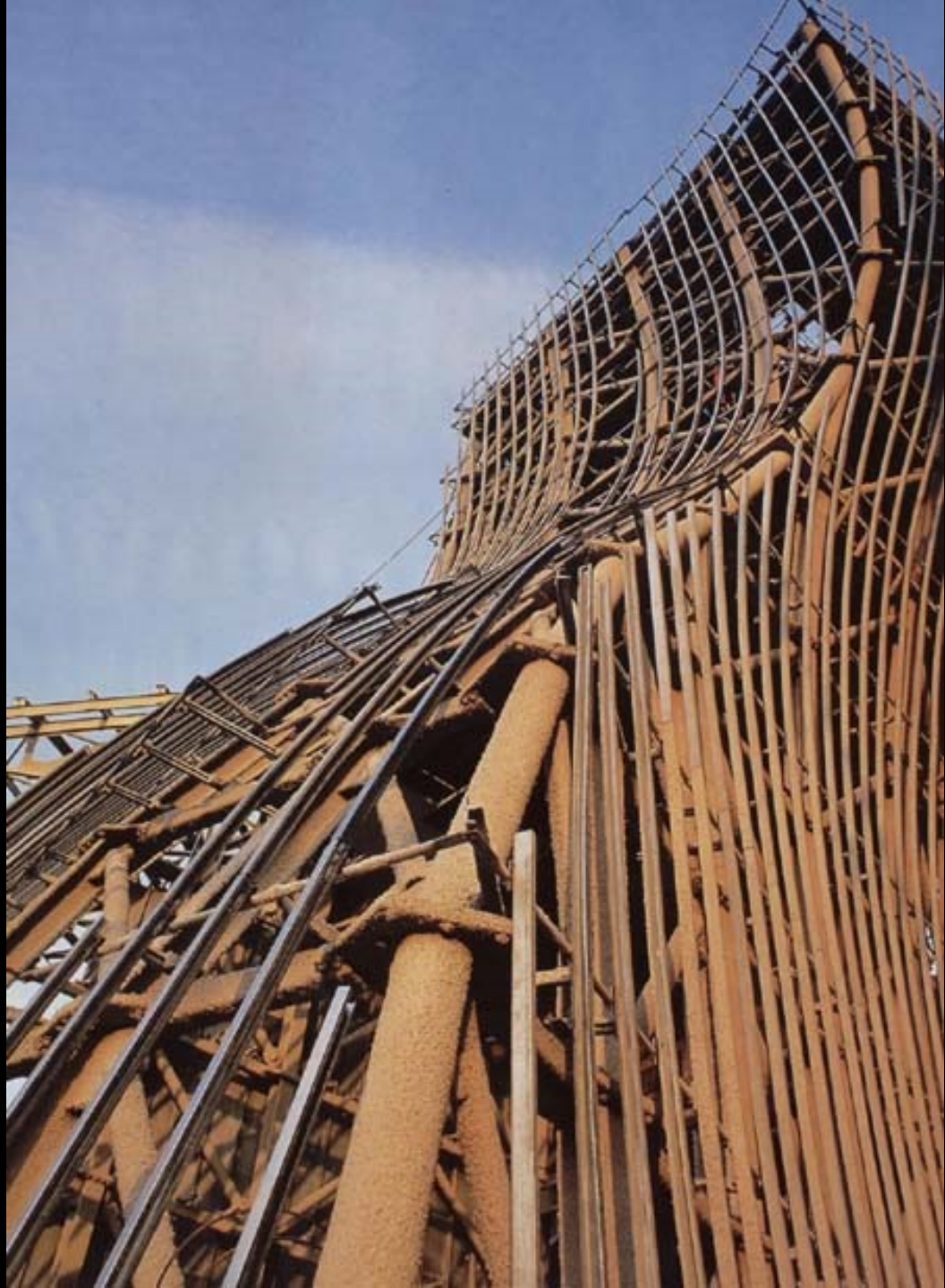








paolomargari.it





Prompt: Zaha Hadid



Prompt: OMA



Prompt: Frank Gehry

A dark, atmospheric movie title card for Francis Ford Coppola's 'Megalopolis'. The background is a dimly lit, narrow alleyway between stone buildings. In the center, a statue of a man in a long coat stands on a pedestal. The scene is moody and cinematic, with some light reflecting off the wet ground.

FRANCIS FORD COPPOLA'S

MEGALOPOLIS



specification

generation

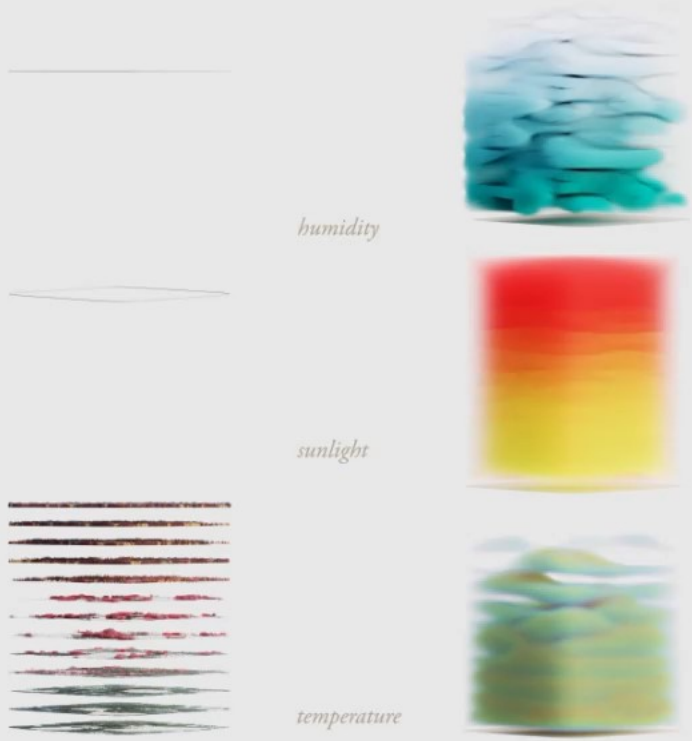
boundary

humidity

species

temperature

generation





OXMAN

Mission
Company
Work
Careers
Contact



OXMAN

- Mission
- Company
- Work
- Careers
- Contact

is a unique composition of bVOCs at a given time, often carrying an associated smell.

the potential to inform molecular design across domains, including horticulture and companion planting, agriculture, scent and flavor design, aromatherapy, and cosmeceuticals, prioritizing symbiotic poly-cultures over mono-cultures.



BIOVOXEL IN THE LAB



BIOVOXEL IN NATURE



BR-01

thriving or stressed ecological state. Ultimately, a Beacon twin infrastructure aims to extend beyond parallel monitoring to entangled connectivity, empowering communication between ecologies separated by time and space.



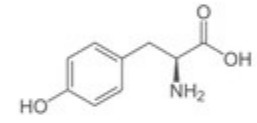
BEACON VERSION 1.0



BEACON VERSION 1.0 IN AN EXTERIOR ENVIRONMENT



L-tyrosine



1.1 melanogenesis











